

Grey Wolf Connector Service

Installation for P21

*Greywolf recommends testing the upgrade on your P21 Play Service first to limit any interference with your Live environment should any configuration issues need to be addressed.

- You will need to have the Microsoft.NET framework (version 4+) installed. This is standard on Windows environments.
- Create a directory called Grey Wolf under C:\ or another location of your choice.
- Create subdirectories under the Grey Wolf directory:
 - \Grey Wolf\Grey Wolf Connector - Live
 - \Grey Wolf\Grey Wolf Connector - Play
 - \Grey Wolf\Grey Wolf Connector - Live2
 - \Grey Wolf\Grey Wolf Connector - Play2
- Put zip files in the directory that matches the name of the zip file. For the purpose of this document, we will use the Grey Wolf Play directory.
- Extract zipped folder.
- Edit the path in the C:\Grey Wolf\Grey Wolf Connector – Play\install.bat and uninstall.bat files to point to the installutil.exe in the .NET framework location.
 - i.e.: c:\Windows\Microsoft.NET\Framework64\v4.0.30319\installutil.
 - This location may change based on your server configuration. The most likely part to change is “v4.0.30319”
- Edit the C:\Grey Wolf\Grey Wolf Connector - Play \GWP21ConnectorPlay.exe.config file modifying the following:

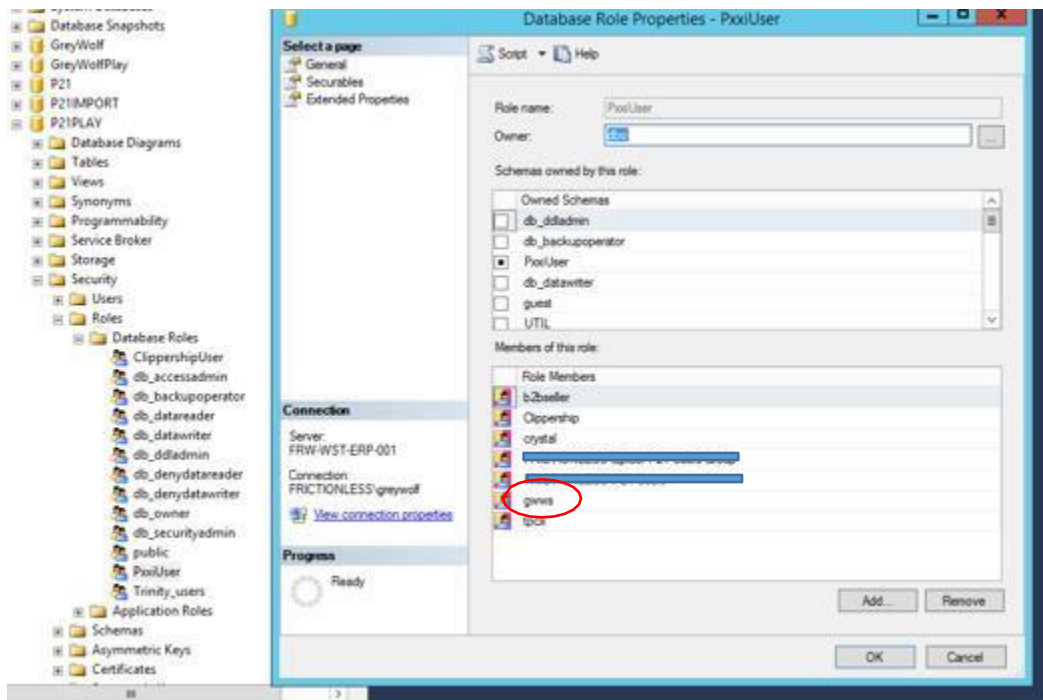
```
5      <add key="baseURI" value="http://YOUR_ACCESSIBLE_IP:8734/GWConnectorPlay2"/>
6
7      <add key="P21Conn" value="Data Source=YOUR_SQL_SERVER_NAME;Initial Catalog=YOUR_P21_DATABASE;User Id=YOUR_P21_USERID;Pa
8
9      <add key="ServiceName" value="Grey Wolf P21 Connector - Play2"/>
10     </appSettings>
11     <system.serviceModel>
12     <services>
13     <service behaviorConfiguration="GWP21ServiceBehavior" name="GWP21ConnectorPlay2.GWWS.GWP21Connector">
14     <endpoint address="" binding="basicHttpBinding" contract="GWP21ConnectorPlay2.GWWS.GWWSInterface" bindingConfig
15     <endpoint address="mex" binding="mexHttpBinding" contract="IMetadataExchange" />
16     <host>
17     <baseAddresses>
18     <add baseAddress="http://YOUR_ACCESSIBLE_IP:8734/GWConnectorPlay2" />
19     </baseAddresses>
20     </host>
```

- Line 5 and line 16:
 - `<add key="baseURI" value="http://YOUR_ACCESSIBLE_IP:8734/GWConnectorPlay"/>`
 - `<add baseAddress="http://YOUR_ACCESSIBLE_IP:8734/GWConnectorPlay"/>`
 - This will be your IP and port number. Replace “YOUR_ACCESSIBLE_IP” with the correct IP address and “8734” with the port number that Connector will use.
 - You will need to report this complete url back to Grey Wolf. Grey Wolf uses this to connect to Prophet 21, so this will need to be **your external IP Address**.
 - Grey Wolf’s IP range is 192.30.134.98 – 192.30.134.126

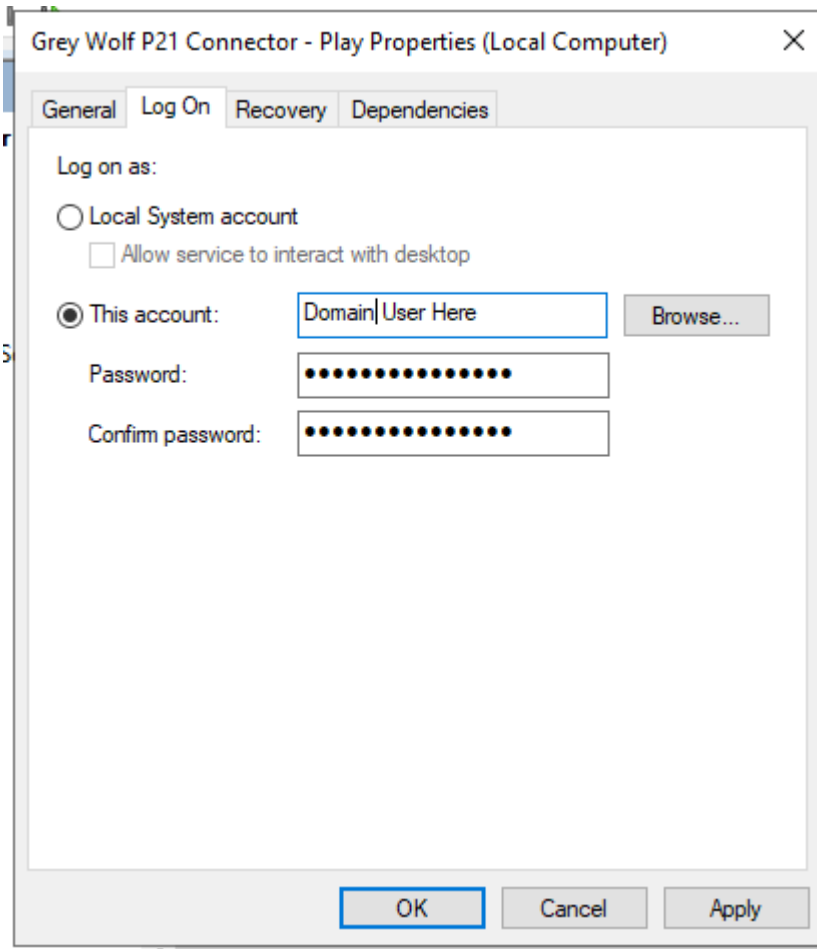
- Line 6:


```
<add key="P21Conn" value="Data Source=YOUR_SQL_SERVER_NAME;Initial Catalog=YOUR_P21_DATABASE;User Id=YOUR_P21_USERID;Password=YOUR_P21_PASSWORD;"/>
```

 - The Data Source will be your P21 SQL Server
 - The Initial Catalog will be the name of your P21 Database
- If you are upgrading the Connector instance, you can take these values from the previously installed instance.
- Create a login for your SQL user in P21Play (or the name of your play database). You will need to add that user to the **PxxiUser** role:



- Run the `\Grey Wolf\Grey Wolf Connector - Play\Install.bat`, this will need to be run as administrator or another user with appropriate permissions to create a windows service with network access.
 - If you are upgrading and using the same name and port as the previous instance, you will need to stop the other instance before continuing. If you are using a different name or port, you do not need to stop the other instance. **We recommend waiting to uninstall the old service until it is confirmed the new service is operating properly.**
- Run `services.msc` (Administrative Tools/Services). Open the *Grey Wolf Connector - Play* service.
 - Under General, set the Startup type to "Automatic".
 - Under Log On, select "this account" and enter a domain user.



- Start the *Grey Wolf Connector – Play* service.
- Report the domain, username, and password required for connection to the SQL Server to Grey Wolf Systems. The domain, username, and password must have sufficient permissions to connect to the SQL Server where the service is running. The username and password for the Windows service user must have sufficient permissions to access the network and run a service, but do not have to be the same as those given to Greywolf for connection to the SQL Server.
- IMPORTANT – You need to restart this service every time a change is made to the config file.

To test do the following:

In a browser, visit http://YOUR_ACCESSIBLE_IP:8734/GWConnectorPlay. This should match the externally accessible baseURI previously set up. That should look similar to this:

GWP21Connector Service

You have created a service.

To test this service, you will need to create a client and use it to call the service. You can do this using the `svcutil.exe` tool from the cc

```
svcutil.exe http://connector.greywolf.com:8734/GWConnectorPlay?wsdl
```

You can also access the service description as a single file:

```
http://connector.greywolf.com:8734/GWConnectorPlay?singleWsd1
```


This will generate a configuration file and a code file that contains the client class. Add the two files to your client application and use

C#

```
class Test
{
    static void Main()
    {
        GWWSInterfaceClient client = new GWWSInterfaceClient();
```

If you have a Connector Lite license, stop here and let Grey Wolf know the Connector instance is ready.

Otherwise, visit <https://myaccount.greywolf.com/connector/connector-keys/> to create an API key.

Visit <https://connector.greywolf.com/p21/ws.aspx?APIKey=1111111111111111&result=xml&v=1&api=GeneralCompanyNumberList&na> 

Replace “1111111111111111” with the API key you created.

The page should look similar to this:

```
▼<DocumentElement>
  ▼<GeneralCompanyNumberList>
    <company_id>...</company_id>
    <company_name>...</company_name>
    <date_created>...</date_created>
    <date_last_modified>...</date_last_modified>
    <address_id>...</address_id>
    <delete_flag>...</delete_flag>
    <mail_address1>...</mail_address1>
    <mail_address2/>
    <mail_city>...</mail_city>
    <mail_state>...</mail_state>
    <mail_postal_code>...</mail_postal_code>
```

Likely error messages:

- The caller was not authenticated by the service.
 - This means the domain user created above does not have permissions to function as the web service user.
- There was no endpoint listening at...
 - Either the service isn’t running, the IP/Port reported to Grey Wolf is wrong, or the firewall is blocking communication.

You will repeat these steps for the \Grey Wolf\Grey Wolf Connector – Live, Live2, and Play2 to create other connections as needed.